

UNIST Theses Reference Style Guides (September 2012)

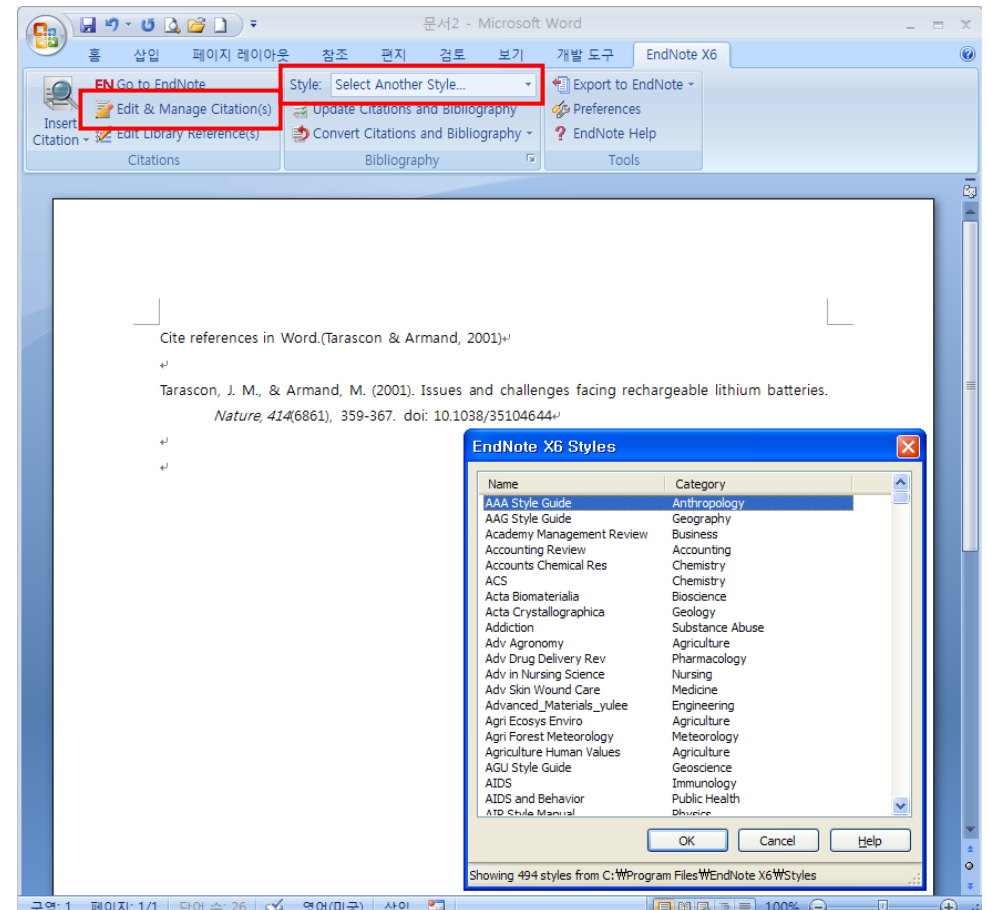
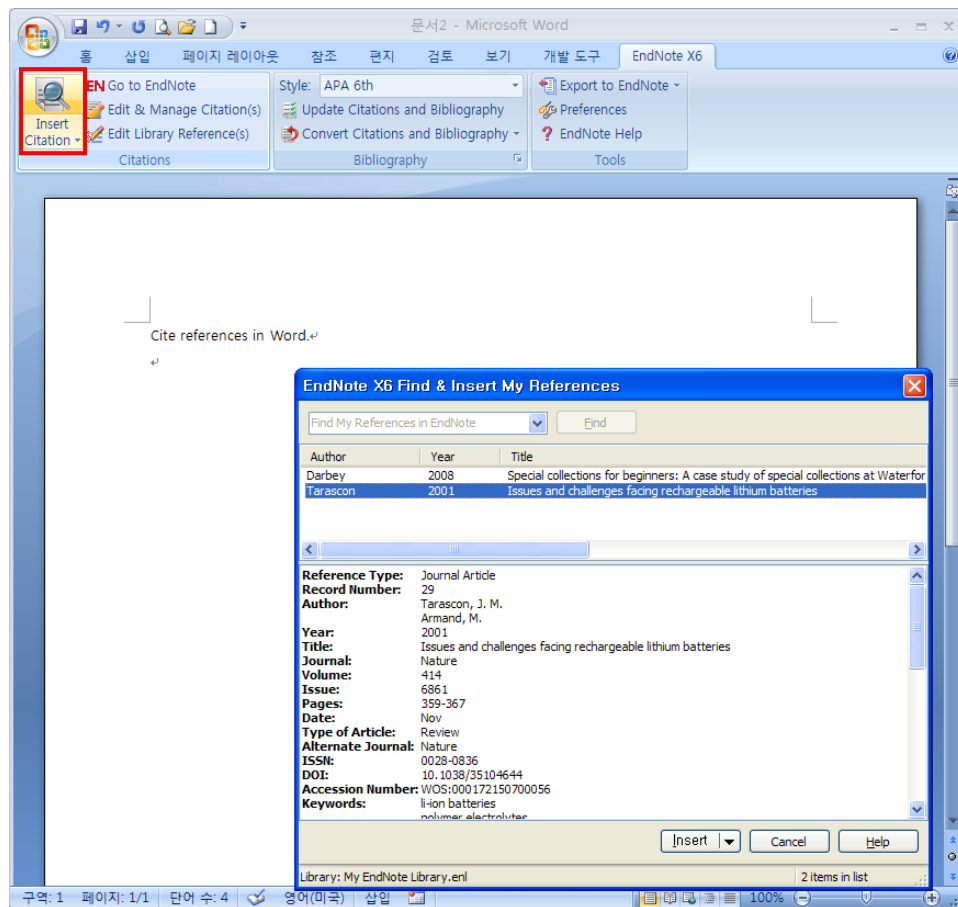
Style	Graduate program	Source	Citing reference in text	Style for Reference Lists (Examples)
ACS Style	MAME - Mechanical Engineering - Materials Science Engineering NBC - Nanochemistry - Chemical Engineering - Bioengineering / Biomedical Science IGE - Battery Science and Technology - Energy Conversion and Storage - Nuclear Science and Engineering	American Chemical Society (ACS) 『The ACS Style Guide: Effective Communication of Scientific Information』 (3 rd edition, 2006)	The syntheses described by Fraser ⁸ take advantage of carbohydrate topology Jensen (3) reported oscillation in the reaction of benzaldehyde with oxygen. According to Harris (2003), drug release is controlled by varying the hydrolytic stability of the ester bond.	<Journal article> Klingler, J. Influence of Pretreatment on Sodium Powder. <i>Chem. Mater.</i> 2005 , 17, 2755-2768. <Book> Le Couteur, P.; Burreson, J. Napoleon's Button: <i>How 17 Molecules Changed History</i> ; Jeremy P. Tarcher/Putnam: New York, 2003; pp 32-47.
AMS Style	MAME - Applied Mathematics	American Mathematical Society (AMS) ■ Write a paper using 'AMSLaTeX' program (http://www.ams.org/publications/authors/authors) and create references with links to MathSciNet by 'MRef'. ■ 『AMS Author Handbook』 (ftp://ftp.ams.org/pub/author-info/documentation/handbk.pdf) ■ MathSciNet (http://www.ams.org/mathscinet/)		
APA Style	DHE - Integrated Industrial Design - Affective and Human Factors Engineering - Engineering and Systems Design UEE - Environmental Engineering - Earth and Environmental Sciences - Urban Infrastructure Engineering TM - General Management - Technology Management / Information System / Entrepreneurship - Finance / Accounting - Marketing / International Business	American Psychological Association (APA) 『Publication Manual of the American Psychological Association』 (6 th edition, 2009) APA Style (www.apastyle.org)	Kessler (2003) found that among epidemiological samples... Early onset result in a more persistent and sever course (Kessler, 2003) In 2003, Kessler's study of epidemiological samples showed that...	<Journal article> Lightm M. A., & Light, I. H. (2008). The geographic expansion of Mexican immigration in the United States and its implications for local law enforcement. <i>Law Enforcement Executive Forum Journal</i> , 8(1). 73-82. <Book> Shotton, M. A. (1989). Computer addiction? A study of computer dependency. London, England: Taylor & Francis.
IEEE Style	ECE - Electrical Engineering - Computer Engineering - Device Physics - Physics	Institute of Electrical and Electronics Engineers (IEEE) 『IEEE Editorial Style Manual』 (http://www.ieee.org/documents/stylemanual.pdf)	as shown by Brown [4],[5] as demonstrated in [3]	<Journal article> [1] R.E.Kalman, "New results in linear filtering and redition theory," <i>J.Basic Eng.</i> , ser. D, vol. 83,pp.95-108, Mar. 1961. <Book> [1] B. Klaus and P. Horn, <i>Robot Vision</i> . Cambridge, MA: MIT Press, 1986

Make reference lists by 'EndNote'.

- ◆ **EndNote:** A tool for organizing your research, creating your bibliography and writing your paper.
- ◆ **Download and Install:** UNIST Portal > Web disk
- ◆ **Guides:** Library homepage > Guides > EndNote Guide
- ◆ **Contact information:** Yulee Kwon, Library team (052-217-1405, kyl7539@unist.ac.kr)

1. Make a document in MS Word and use the 'EndNote' commands to search and insert citations.

2. Use the style dropdown and other commands to edit and change a style.

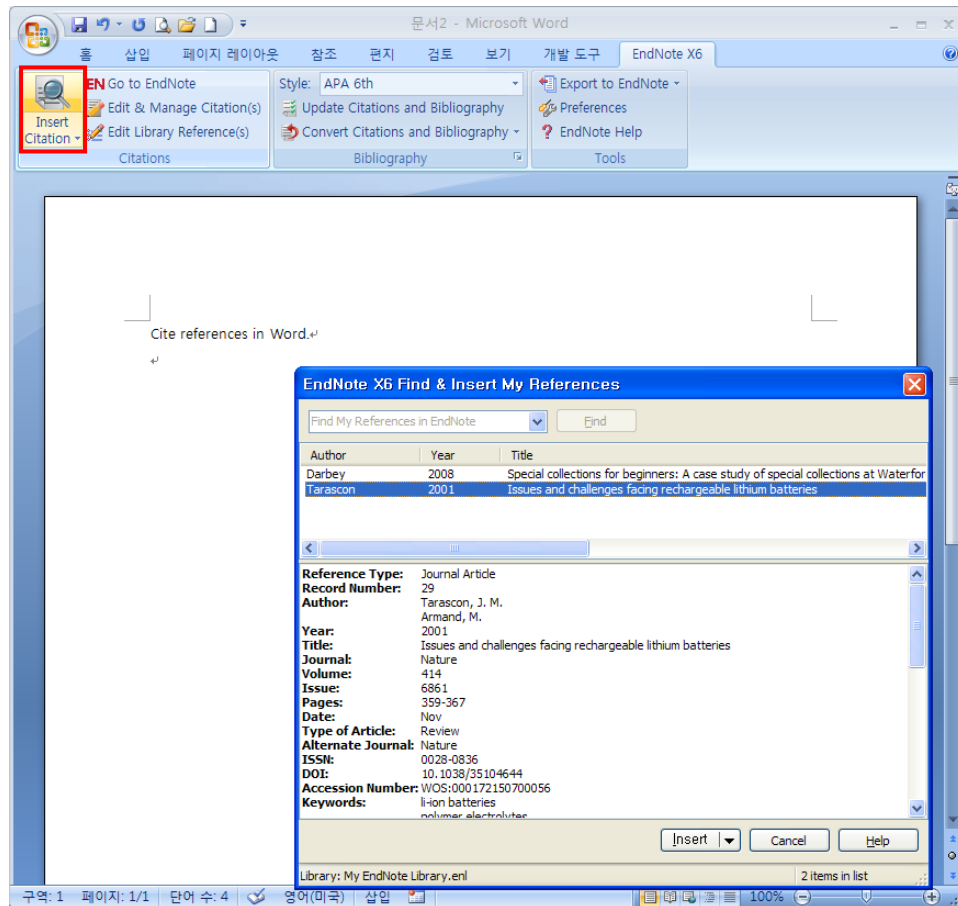


Make reference lists by 'EndNote'.

학위논문 작성 시 EndNote 프로그램과 MS Word를 활용하여 참고 문헌을 쉽게 작성할 수 있습니다.

- ◆ **EndNote:** 논문 작성에 필요한 참고문헌을 손쉽게 수집 및 관리할 수 있는 프로그램으로, 논문 작성 시 참고문헌 작성에 용이
- ◆ **프로그램 다운로드 및 설치:** UNIST Portal – 인터넷디스크
- ◆ **가 이 드:** 도서관 홈페이지 > Guides > EndNote Guide
- ◆ **문 의:** 문헌정보팀 권유리 (052-217-1405, kyl7539@unist.ac.kr)

1. MS Word 프로그램으로 논문을 작성합니다. 참고문헌을 삽입해야 할 경우 'EndNote' 탭을 실행하여 참고문헌을 삽입합니다.



2. 상단 'Style' 과 'Edit & Manage Citation(s)' 메뉴를 이용하여 원하는 Reference Style로 변경할 수 있습니다.

