



ADVANCING SCIENCE, SERVING SOCIETY

<https://www.science.org/>

출판사 소개

- ✓ AAAS (American Association for the Advancement of Science)는 1848년에 설립된 학회로, 세계적인 과학자들로 구성된 Editors 그룹을 통해 우수한 아티클을 제공
- ✓ 원문 제공 년도 : 1997년 - 현재
(Science Classic (Science 지 백파일) : 창간호 - 1996년)
- ✓ 주제 분야
 - **Science** : 과학 전 주제 분야
 - **Science Signaling** : 세포 신호, 시스템 생물학, 통합 생물학, 신약 개발
 - **Science Translational Medicine** : 질병예방/치료/진단 방법과 함께 학제간 연구와 임상간의 격차를 좁히는 연구 제공
 - **Science Immunology** : 중요 신규 톨과 테크닉을 포함한 모든 면역학적 연구 분야의 발전을 출판
 - **Science Robotics** : 모든 환경에 대한 로봇 공학의 연구 및 개발의 발전을 촉진을 위해 출판
 - **Science Advances** : 컴퓨터, 엔지니어링, 환경, 생활, 수학, 물리, 사회과학
- ✓ 저널 종수 : 6종 (Open Access인 Science Advances 포함)
- ✓ 저널 이용 홈페이지 : <https://www.science.org/>

Main Page

https://www.science.org/

Science

단순검색



LOG IN

BECOME A MEMBER

NEWS CAREERS COMMENTARY JOURNALS

GET OUR E-ALERTS

해당 페이지로 바로가기

LATEST NEWS

최신 뉴스 제공

LOG IN

BECOME A MEMBER

Enter Search Term



SCIENCE.ORG

NEWS

CAREERS

COMMENTARY

JOURNALS

SCIENCE

SCIENCE ADVANCES

SCIENCE IMMUNOLOGY

SCIENCE ROBOTICS

SCIENCE SIGNALING

CUSTOM PUBLISHING

COLLECTIONS

VIDEOS

PODCASTS

BLOGS

VISUALIZATIONS

PRIZES AND AWARDS

AUTHORS & REVIEWERS

LIBRARIANS

ADVERTISERS

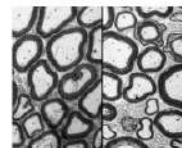
ABOUT

HELP



SCIENCE ROBOTICS
18 FEB 2020
The role of soft robotics in assistive technology

BY RONALD H. HÖSSER, RITU RAMAN, ET AL



SCIENCE TRANSLATIONAL MEDICINE
18 FEB 2026
BDNF Val⁶⁶Met is a genetic determinant and therapeutic target in CIPN

BY LI-HSIEN CHEN, PENG-CHAN LIN, ET AL

SCIENCE IMMUNOLOGY 12 FEB 2025
TCR γ constant domain usage tunes human $\gamma\delta$ T cell function

BY MAYURI VIDWANATHAN, CAITLIN D. CASTRO, ET AL

19 FEB 2020

A little-known flu virus is sickening cattle around the world. Are humans next?

19 FEB 2020

Unorthodox 'universal vaccine' offers broad protection in mice

19 FEB 2020

Pollution plume from falling rocket debris tracked in real time

19 FEB 2020

Scientists decry Trump's rush to loosen radiation exposure standards

18 FEB 2026

Musical chairs leadership shake-up planned for science agencies

18 FEB 2026

Highly destructive mussel has started to invade the Amazon

MORE NEWS >

Main Page (cont'd)

사설

“

When attention is too focused on charisma and a certain amount of fakery is considered acceptable, reality can be overcome by hype.

EDITORIAL | 14 JANUARY 2022 | H. HOLDEN THORP

FIRST RELEASE

정식 이슈로 발간 전
온라인 게재된 논문 미리보기

SCIENCE | 21 JAN 2022

Longitudinal analysis reveals high prevalence of Epstein-Barr virus associated with multiple sclerosis

sclerosis

SCIENCE | 13 JAN 2022

Dipospin magnetism and spin-polarized superconductivity in Bernal bilayer graphene

SCIENCE TRANSLATIONAL MEDICINE | 13 JAN 2022

Antibodies elicited by SARS-CoV-2 infection or mRNA vaccines have reduced neutralizing activity against Beta and Omicron pseudoviruses

SCIENCE | 11 JAN 2022

Strengthening scientific integrity

SCIENCE TRANSLATIONAL MEDICINE | 11 JAN 2022

Predicting the mutational drivers of future SARS-CoV-2 variants of concern

+ MORE FIRST RELEASE PAPERS

ADVERTISEMENT



2022 AAAS MARTIN AND ROSE WACHTEL CANCER RESEARCH AWARD

For young investigators in cancer research
Due February 1, 2022

Submit your application »

AAAS
Science Translational Medicine

Main Page (cont'd)

저널별 최신호 게재

SCIENCE Volume 387 | Issue 6736 | February 20



View Cover

RESEARCH ARTICLE | BY XIANGJIANG FAN, TRISTAN G. FLEMING, ET AL.
Magnetic modulation of keyhole instability during laser welding and additive manufacturing

RESEARCH ARTICLE | BY MAXIM E. ZASLAVSKY, ERIN CRAIG, ET AL.
Disease diagnostics using machine learning of B cell and T cell receptor sequences

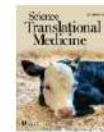
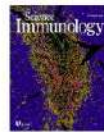
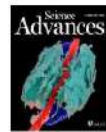
RESEARCH ARTICLE | BY KAI-MIN WU, QIAN-HUI XU, ET AL.
Neuronal FAM171A2 mediates α -synuclein fibril uptake and drives Parkinson's disease

PERSPECTIVE | BY KRISTIN ANDREWS, JONATHAN BIRCH, ET AL.
Evaluating animal consciousness

[VIEW TABLE OF CONTENTS >](#)

최신호 TOC 로 이동

해당 저널 최신 페이지로 이동



Main Page (cont'd)

The screenshot shows the Science website's main page. At the top, there is a navigation bar with links for NEWS, CAREERS, COMMENTARY, and JOURNALS. A COVID-19 button is also present. The Science logo is centered, with search and login options on the right. A red button labeled 'BECOME A MEMBER' is in the top right corner. Below the navigation bar, a 'CUSTOM PUBLISHING' section is highlighted with a red circle. This section contains several sponsored articles, each with a 'SPONSORED' label and 'ADVERTORIAL' or 'WEBINAR' tag. The articles include: 'Tsinghua-Science Workshops: Epigenetics Structure and Function...', 'The HKIAS Rising Star Lecture Series nurtures leading young...', 'Interrogating cancer drivers via CRISPR: Mutant TP53 as a therapeutic target in hypodiploid ...' (by Jackie Oberst, Ph.D., et al.), 'A new paradigm in AI research and education', and 'Opportunities and challenges of blood-based biomarkers in...'. A 'VIEW MORE' link is at the bottom right of this section.

NEWS CAREERS COMMENTARY JOURNALS COVID-19 Science LOG IN BECOME A MEMBER

CUSTOM PUBLISHING

Sponsored content

SPONSORED ADVERTORIAL
Tsinghua-Science Workshops: Epigenetics Structure and Function...

SPONSORED ADVERTORIAL
The HKIAS Rising Star Lecture Series nurtures leading young...

SPONSORED WEBINAR
Interrogating cancer drivers via CRISPR: Mutant TP53 as a therapeutic target in hypodiploid ...
BY JACKIE OBERST, PH.D., ET AL.

SPONSORED ADVERTORIAL
A new paradigm in AI research and education

SPONSORED WEBINAR
Opportunities and challenges of blood-based biomarkers in...
BY JACKIE OBERST, PH.D., ET AL.

VIEW MORE >

An advertisement for Science Signaling journal. It features a colorful, abstract image of a cell or tissue. The text reads 'Submit in just one click »' and 'Science Signaling' with the AAAS logo below it. The word 'ADVERTISEMENT' is written in small letters above the image.

ADVERTISEMENT

Submit in just one click »

Science Signaling
AAAS

CAREERS

NEWS FEATURES

해당 섹션에 대한 설명



Main Page (cont'd)

Science

Science
Advances

Science
Immunology

Science
Robotics

Science
Signaling

Science
Translational
Medicine

NEWS

All News
ScienceInsider
News Features
Subscribe to News from Science
News from Science FAQ
About News from Science

CAREERS

Careers Articles
Find Jobs
Employer Profiles

COMMENTARY

Opinion
Analysis
Blogs

JOURNALS

Science
Science Advances
Science Immunology
Science Robotics
Science Signaling
Science Translational Medicine
Science Partner Journals

AUTHORS & REVIEWERS

Information for Authors
Information for Reviewers

FOLLOW US



LIBRARIANS

Manage Your Institutional
Subscription
Library Admin Portal
Request a Quote
Librarian FAQs

ADVERTISERS

Advertising Kits
Custom Publishing Info
Post a Job

RELATED SITES

AAAS.org
AAAS Communities
EurekAlert!
Science in the Classroom

ABOUT US

Leadership
Work at AAAS
Prizes and Awards

HELP

FAQs
Access and Subscriptions
Order a Single Issue
Reprints and Permissions
Contact Us



© 2022 American Association
for the Advancement of Science.
All rights reserved. AAAS is a
partner of HINARI, AGORA,
OARE, CHORUS, CLOCKSS,
CrossRef and COUNTER.

페이지 하단에
이용자, 저자, 사서를 위한 링크 제공

Search



Science



LOG IN

BECOME A MEMBER

Enter Search Term **A**

SEARCHING: Anywhere **B**

- Anywhere
- Science
- Science Advances
- Science Immunology
- Science Robotics
- Science Signaling
- Science Translational Medicine

C

TRENDING TERMS

COVID-19

GENOME EDITING

BATTERIES

ADVANCED SEARCH

SEARCH >

단순 검색

A. 키워드 입력

B. 검색 위치 지정

C. Trending terms 로 자주 검색되는 용어로 검색

piezoelectric stimulation for cartilage regeneration in rabbits

internalization of the purinergic P2Y₆ receptor limits colitis progression

was investigated for sexual misconduct, it took a community to help me

exosome-like vesicles for targeted cancer therapy

13 JAN 2022

This map of distant galaxies could help untangle the mystery of dark energy



Advanced Search

ADVANCED SEARCH

ADVANCED SEARCH CITATION SEARCH SEARCH HISTORY SAVED SEARCHES

FIELD **A**
Anywhere **B** +

ARTICLE TYPE: **C**
e.g. Research Article

PUBLISHED IN: **D**
e.g. Science Robotics

PUBLICATION DATE: **E**

ALL DATES
 LAST
Select interval

CUSTOM RANGE

FROM
Select Month

TO
Select Month Select Year

고급 검색

A. 검색 대상 지정 (서명, 저자, 키워드, 초록, 저자소속)

B. 검색 대상 항목 추가

C. 아티클 유형 지정

D. 검색 대상 저널 지정

E. 출판연도 지정 (전체, 최근 1/6/12개월, 범위 지정)

F. 검색 팁

- 불리안 연산자 사용 : AND 연산자 기본

- 저자 검색 : AND 는 공저자 검색, OR는 저자 중 검색

- 구 검색 : ? 혹은 *를 사용하여 연관키워드 검색.

단, 검색어 시작 혹은 인용구 내 검색 불가

- DOIs : <http://dx.doi.org> 제외한 doi 형식으로 검색

Search Tips **F**

Boolean searches
You can use the Boolean Operators AND, OR, and NOT within search fields. By default, an AND relationship is assumed between search terms unless another operator is specified.

Searching for authors
To search for multiple authors, separate each author name with either AND or OR. Using AND will search content that has been co-authored by the authors. Using OR will search for content that has been authored by either of the authors.

Searching for phrases
Use a question mark (?) in a search term to represent one character and use an asterisk (*) to represent two or more characters. For example, searching for Europe* will find results containing Europe and European. Wildcards cannot be used at the start of a search term or when searching for phrases in quotes.

DOIs
Search for DOIs using the format 10.1302/0301-0X.99B9.BJJ-2016-1078.R2 (do not add http://dx.doi.org).

CLEAR

SEARCH

Advanced Search (Cont'd)

ADVANCED SEARCH

ADVANCED SEARCH

CITATION SEARCH **A**

SEARCH HISTORY **B**

SAVED SEARCHES **C**

Please select Journal ▼

Volume

Issue

Page

Year

climate

REFINE ▼

SEARCH ▶

FILTERS

10000 RESULTS FOUND **D**

RELEVANCE ▼

POLICY FORUM


Addressing the human cost in a changing climate

BY BINA DESAI, DAVID N. BRESCH, CHRISTELLE CAZABAT, STEFAN HOCHRAINER-STIGLER, REINHARD MECHLER, SYLVIA...



PERSPECTIVE

Transformational ecology and climate change

- A. Citation 검색
 - 대상 저널 선택 후 볼륨/이슈/페이지 정보 등으로 검색
- B. Search History
 - 검색결과를 다시 불러올 수 있음
- C. Saved Searches
 - 검색식 저장. 개인계정으로 로그인 필요
- D.  클릭하여 검색식 저장

Search Results

Science

LOG IN

BECOME A MEMBER

climate

E REFINE

SEARCH >

B FILTERS

A 10000 RESULTS FOUND

C RELEVANCE

PUBLISHED IN

ARTICLE TYPE

PEER REVIEWED

PUBLICATION DATE

POLICY FORUM

Addressing the human cost in a changing climate

BY BINA DESAI, DAVID N. BRESCH, CHRISTELLE CAZABAT, STEFAN HOCHRAINER-STIOLER, REINHARD MECHLER, SYLVAIN PONSERRE, JACOB SCHEWE · SCIENCE
VOL. 372, NO. 6548 · 18 JUN 2021 : 1284-1287

D

PERSPECTIVE

Transformational ecology and climate change

BY STEPHEN T. JACKSON · SCIENCE · VOL. 373, NO. 6559 · 01 SEP 2021 : 1085-1086

POLICY FORUM

How ambitious are oil and

BY SIMON DIETZ, DAN GARDINER, VALENTIN JA

- A. 검색된 기사 수 확인, 검색식 저장, RSS 피드 설정
- B. Filters : 제한검색으로 검색결과를 세분화
 - 발행 위치로 제한 : 저널, 블로그 등
 - 아티클 유형으로 제한 : 뉴스, 코멘터리, 연구논문 등
 - Peer Reviewed 여부로 제한
 - 발행시기로 제한
- C. 검색결과 정렬방법
 - 날짜, Most Read, Most Cited, 알파벳순
- D. Reading list에 추가
- E. 재검색

Journal Page - TOC

The screenshot shows the Science journal website interface. At the top, there is a navigation bar with 'Science' logo and links for 'Current Issue', 'First release papers', 'Archive', and 'About'. A 'Submit manuscript' button is also present. A search icon, shopping cart, and 'LOG IN' link are on the right, along with a 'BECOME A MEMBER' button. Below the navigation bar, the current issue information is displayed: 'SCIENCE VOLUME 391 | ISSUE 6787 | 19 FEB 2026'. The cover image shows two Spinosaurus mirabilis. A 'VIEW MORE' link is provided. Below the cover, there are links for 'Print table of contents', 'Advertising (PDF)', 'Classified (PDF)', and 'Masthead (PDF)'. On the left, a sidebar menu lists various sections: EDITORIAL, NEWS, IN DEPTH, FEATURE, COMMENTARY, EXPERT VOICES, PERSPECTIVES, POLICY FORUM, BOOKS ET AL., LETTERS, RESEARCH, RESEARCH HIGHLIGHTS, RESEARCH ARTICLES, CAREERS, and WORKING LIFE. The main content area shows an 'EDITORIAL' section with the title 'Reimagining STEM doctoral training' by Ian Danks and Prindha Narang. Below that is a 'NEWS' section with 'IN DEPTH' sub-section, featuring 'Scientists decry rush to loosen radiation standards' by Warren Cornwall. A 'THIS WEEK'S PODCAST' section is also visible, titled 'Matching sounds to shapes, and stories from the AAAS annual meeting'.

- A. 최신포, First released paper 및 과월호로 이동
- B. 최신포 커버 안내 및 TOC 등 인쇄본 형태로 제공
- C. 현재 이슈 전후로 이동, 전체 이슈페이지로 이동
- D. PDF/Abstract 보기, 북마크하기
- E. 해당 섹션으로 바로가기
- F. Alerts 설정
- G. 이주의 팟캐스트, 편집장 H. Holden Thorp의 Blog

Article Page

HOME > SCIENCE > VOL. 375, NO. 6577 > IMPACT OF COMMUNITY MASKING ON COVID-19: A CLUSTER-RANDOMIZED TRIAL IN BANGLADESH

C RESEARCH ARTICLE | CORONAVIRUS

E f t in r s e

Impact of community masking on COVID-19: A cluster-randomized trial in Bangladesh

A JASON ABALUCK , LAURA H. KWONG , ASHLEY STYCZYNSKI , ASHRAFUL HAQUE , MD. ALAMGIR KABIR , ELLEN BATES-JEFFERYS, EMILY CRAWFORD, JADE BENJAMIN-CHUNG , SHABIB RAHMAN , [] AHMED MUSHFIQ MOBARAK  +13 authors [Authors Info & Affiliations](#)

SCIENCE • 2 Dec 2021 • Vol 375, Issue 6577 • DOI:10.1126/science.aba9069

35,515

D 🔔 📖 🗨️ 📄

Persuading people to mask

Even in places where it is obligatory, people tend to optimistically overstate their compliance for mask wearing. How then can we persuade more of the population at large to act for the greater good? Abaluck *et al.* undertook a large, cluster-randomized trial in Bangladesh involving hundreds of thousands of people (although

B i ⚡ 👁️ 🔗 📄 📅 📄

A. 저자 정보 제공. ORCID iD로 상세 정보 확인

B. Article Tools

- 기사 및 작성자 정보
- 다운로드 횟수 등 Metrix & Citation 정보
- View option
- 레퍼런스
- 이미지 등
- 도표
- 공유

C. OA 여부, 섹션 정보 등 제공

D. Alert 설정, 북마크, 인용, PDF 열기

E. SNS 공유

F. TOC로 이동

CURRENT ISSUE



CDK4 and CDK6 kinases: From basic science to cancer therapy

BY ANNE FASSL, YAN QENG, ET AL.

Mitochondria shed their outer membrane in response to infection-induced stress

BY XIANHE LI, JULIAN STRAUB, ET AL.

Impact of community masking on COVID-19: A cluster-randomized trial in Bangladesh

BY JASON ABALUCK, LAURA H. KWONG, ET AL.

F TABLE OF CONTENTS >

ADVERTISEMENT



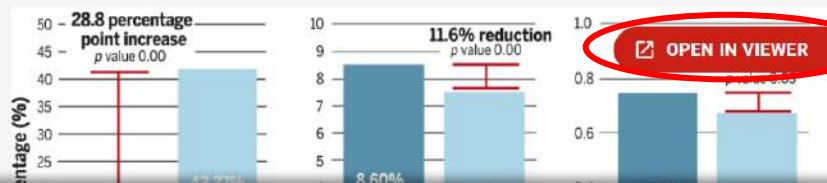
PDF

Help

Article Page (Cont'd)

CONCLUSION

A randomized-trial of community-level mask promotion in rural Bangladesh during the COVID-19 pandemic shows that the intervention increased mask usage and reduced symptomatic SARS-CoV-2 infections, demonstrating that promoting community mask-wearing can improve public health.



OPEN IN VIEWER

그래프, 표를 새창에서 열기

RELATED JOBS

Senior Specialist, Continuous Improvement

GSK
Collegeville, Pennsylvania

Supervisor, Contact Center

City of Hope
Duarte, California

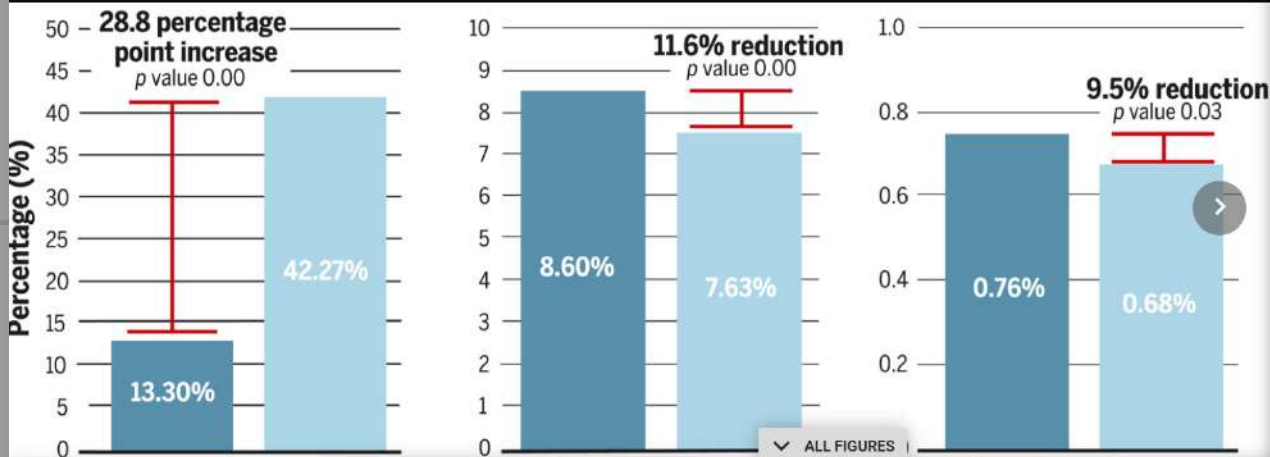
BACK TO ARTICLE

Impact of community masking on COVID-19: A cluster-randomized trial in Bangladesh

Image, Zoom, Download, Back, Share icons

아티클로 이동

이미지 확대, 다운로드, 공유



Impact of intervention on mask use and COVID-19 outcomes. Figure 1 shows the raw means of mask use (left), COVID-19 symptoms (middle), and symptomatic seropositivity (right) in the control and treatment arms. The estimated change in each outcome, confidence intervals, and p values adjust for preregistered covariates (and thus are not computable from the raw values). Individuals who were symptomatic but did not consent to blood collection were dropped from the sample; measured symptomatic seropositivity thus understates the true fraction of the population that was symptomatic seropositive.

PDF

Help

Article Page (Cont'd)

ence ratio = 0.65 [0.45, 0.85]). Mask distribution with promotion was a scalable and effective method to reduce symptomatic SARS-CoV-2 infections.

As of September 2021, the COVID-19 pandemic has taken the lives of more than 4.7 million people. Inspired by the growing body of scientific evidence that face masks have the potential to slow the spread of the disease and save lives (1-10), we conducted a cluster-randomized controlled trial covering 342,185 adults in 600 villages in rural Bangladesh with the dual goals of (i) identifying community-wide mask-wearing and (ii) tracking changes in symptomatic respiratory syndrome coronavirus 2 (SARS-CoV-2) infections as a result of our intervention. Although vaccines may constrain the spread of SARS-CoV-2 in the long-term, it is unlikely that a substantial fraction of the population in low- and middle-income countries will have access to vaccines before the end of 2021 (11). Developing scalable and effective means of combating COVID-19 is thus of first-order policy importance.

The World Health Organization (WHO) declined to recommend mask adoption until June 2020, citing the lack of evidence from community-based randomized-controlled trials as well as concerns that mask-wearing would create a false sense of security (12). Critics argued that those who wore masks would engage in compensating behaviors, such as failing to physically distance from others, resulting in a net increase in transmission (13). We directly test this hypothesis by measuring physical distancing.

We designed our trial to encourage universal mask-wearing at the community level,

Reference 링크

1. J. Howard, A. Huang, Z. Li, Z. Tufekci, V. Zdimal, H.-M. van der Westhuizen, A. von Delft, A. Price, L. Fridman, L.-H. Tang, V. Tang, G. L. Watson, C. E. Bax, R. Shaikh, F. Questier, D. Hernandez, L. F. Chu, C. M. Ramirez, A. W. Rimoin, An evidence review of face masks against COVID-19. *Proc. Natl. Acad. Sci. U.S.A.* **118**, e2014564118 (2021).

+ SEE ALL REFERENCES · CROSSREF · PUBMED · GOOGLE SCHOLAR

2. N. H. L. Leung, D. K. W. Chu, E. Y. C. Shiu, K.-H. Chan, J. J. McDevitt, B. J. P. Hau, H.-L. Yen, Y. Li, D. K. M. Ip, J. S. M. Peiris, W.-H. Seto, G. M. Leung, D. K. Milton, B. J. Cowling, Respiratory virus shedding in exhaled breath and efficacy of face masks. *Nat. Med.* **26**, 676-680 (2020).

CROSSREF · PUBMED · GOOGLE SCHOLAR

3. C. R. MacIntyre, A. A. Chughtai, Facemasks for the prevention of infection in healthcare and community settings. *BMJ* **350**, h694 (2015).

CROSSREF · PUBMED · GOOGLE SCHOLAR

CrossRef, PubMed, Google Scholar 이동

Vissing, P. B. Nielsen, U. C. Winslow, K. Fogh, R. Hasselbalch, J. H. Kristensen, A. Ringgaard, M. Porsborg Andersen, N. B. Goecke, R. Trebbien, K. Skovgaard, T. Benfield, H. Ullum, C. Torp-Pedersen, K.

Individual Account

LOGIN OPTIONS

INSTITUTIONAL LOGIN

LIBRARIAN LOGIN

INDIVIDUAL LOGIN

Individual Login provides a AAAS ID for access to *Science* for AAAS members, *News from Science* Subscribers, and access to other journals in the *Science* family to users who have purchased individual subscriptions

AAAS LOGIN

[New User](#)

[Activate your Account](#)

[Account Help](#)

[Manage AAAS ID in My Profile](#)

My Account

ACCESS ENTITLEMENTS

● ALERTS

BOOKMARKS

SAVED SEARCHES

개인 이용자의 경우 Alert 설정, 검색결과 저장 등을 위해
개인계정 생성 필요

- Individual Login으로 이동
- 기존 계정이 있는지 확인 후 신규 계정 생성
혹은 기존 계정 리셋
- 구입한 content 리스트
- Alert, 북마크, 검색결과 저장

Thank you!

www.ebsco.co.kr

Tel: 02-598-2571